

Town of Dover Community Center

Building Committee

- Design Update
 - Renovation
 - New Construction

April 5th, 2021

Building a vision

Building consensus

1. Schedule Update
2. Site Notes
3. Updated Materials
4. Updated Design Options

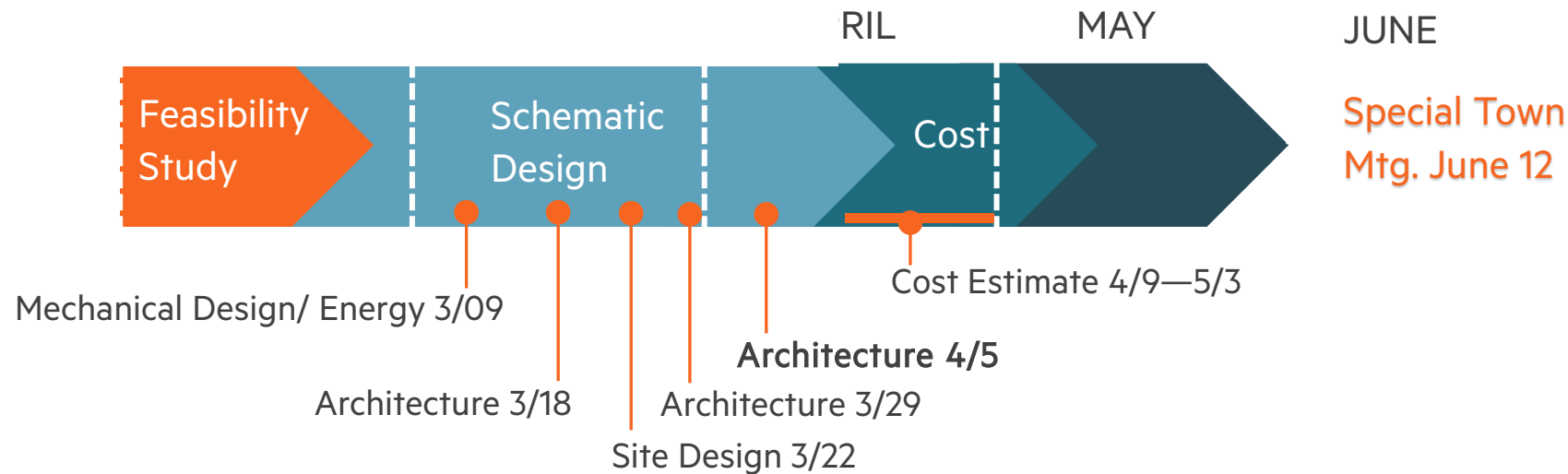
Schematic Design

Upcoming Meetings

- ✓ Energy Sub-Committee – 3/4
- ✓ Review program with COA - 2/24
- ✓ Review program with Parks & Recreation -2/24
- ✓ Meet with Planning to review Parking Options -3/8
- ✓ Kitchen Design

Milestones

- ✓ Feasibility Report
- ✓ Mechanical Design
- ✓ Structural Design
- ✓ Site Design
 - Architectural Design
 - Cost Estimating Set





Site Notes

Court Condition



Existing: 80ft x 40ft



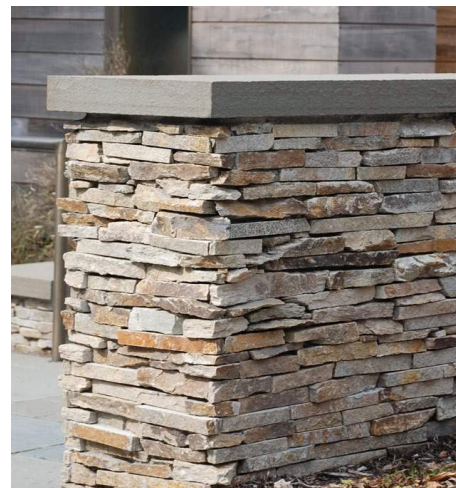
Site Option



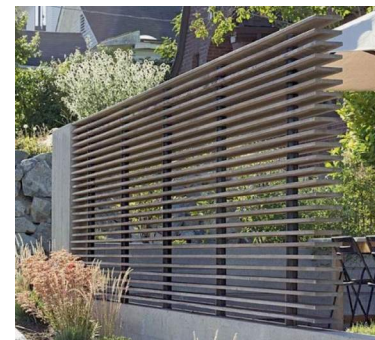
Proposed: 82ft x 48ft
(court: 70ft x 40ft + run-out)



stone wall at patios



Demi-allée at entrance



Natural play area



Attractive bark @ winter

A short, thick orange line segment positioned diagonally to the left of the title text.

Precedent and Inspiration

Dover Town Center Context



Context: Compatible Form & Materials



Tozzer Library
Harvard University



UPenn Law School Addition
Philadelphia, PA



Colby College
Waterville, ME



Music Addition, UPenn
Philadelphia, PA

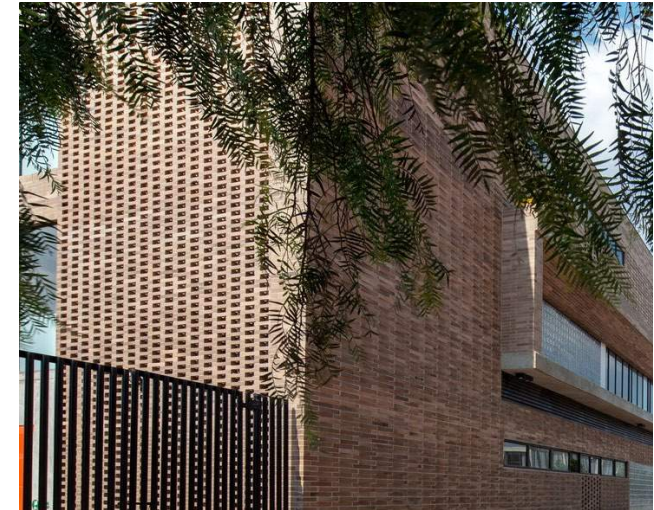
Textured Brick and Terra Cotta



Ribbed Terra Cotta - Terreal
Hospital de Luz, Toulouse, France



Dorothy Garrod Building
Cambridge, United Kingdom



Kindergarten/ Cultural Center
Bogotá, Colombia



Tozzer Anthropology Building
Harvard University

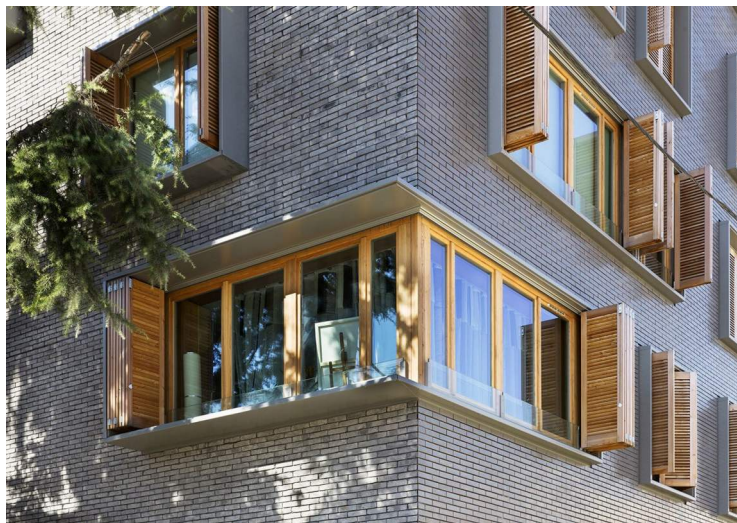
Alternate Panels



The Williams Bookstore
Williamstown, MA



Sunita Williams Elementary
Needham, MA

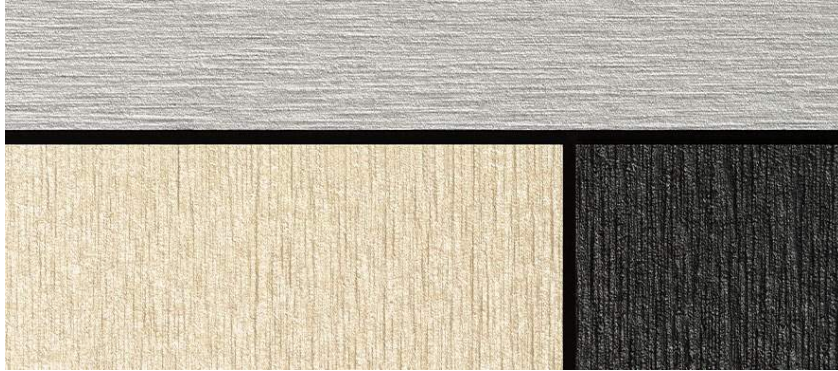


ZAC Boucicaut Apartments
Paris, France



Wellington School
Belmont, MA

UHP Cementitious Panels



Swiss Pearl



Taktl



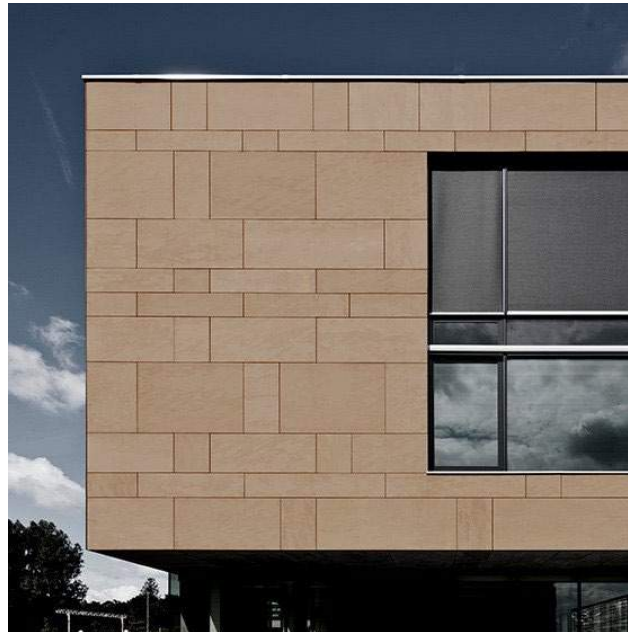
Nichiha



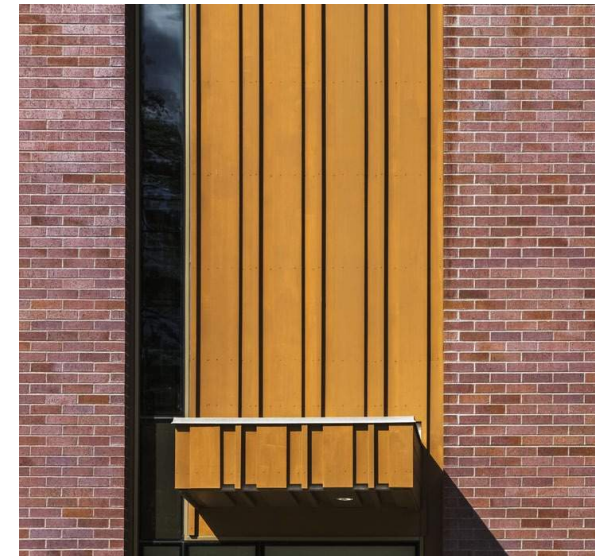
TAKTL Panels



Swiss Pearl



Equitone



Factory Painted Panels

Metal Roof/ Wall



Metal Wall Panels



Eave Detail – w/Snow Guard



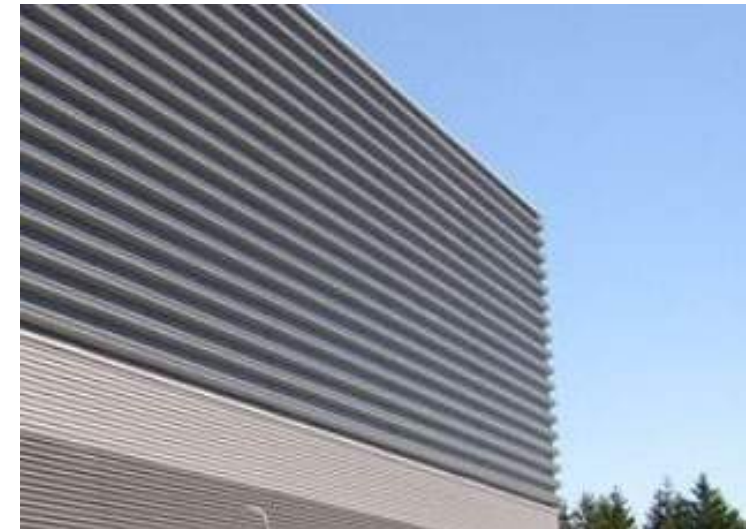
Zinc Standing Seam



Morin Metal Roof



Anodized Aluminum Panels



Insulated Metal Panel - Centria

Stone



Stone rainscreen



Slate panels



Structural Slate



Stacked Stone



Stacked Stone



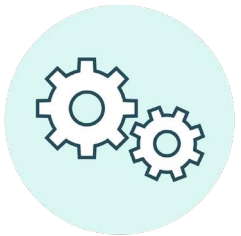
Updated Design Alternatives

Criteria for Success



General

- Meets Town's construction budget of \$9.5M, new or renovation
- Provides full universal access
- Maximizes grant opportunities



Functionality

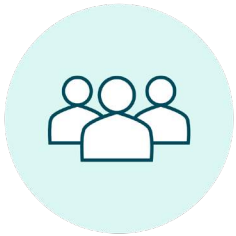
- Maximizes flexible-use space for multi-generational programming
- Provides core program needs of Council On Aging and Park & Recreation
- Meets present and future community needs (next 20 years)
- Program complements other public venues in Town and region
- Provides a main entry with central control
- Creates exterior space for both programmed and informal activities

Criteria for Success



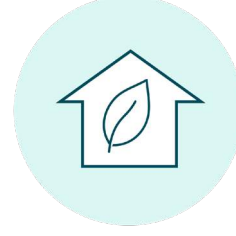
Experiential

- Creates a welcoming atmosphere
- Encourages residents to meet, network and be active
- Aesthetically pleasing architecture
- Healthy interior environment



Community

- Building and site are architecturally harmonious with the local built environment
- As a focal point of town life, encourages community engagement
- Serves the entire, multi-generational community
- Maximize stakeholder participation in study process



Sustainability

- UtiEnergy efficient, evaluate renewable energy options
- Uses durable and easily maintainable building materials
- Dark Sky lighting, protects abutters from light spill from DCC site
- Resiliency: provides robust infrastructure to support the community in weather event

Renovation – Monitor Roof Pavilion



Corner of Springdale Ave.



Terra Cotta



Existing Brick Color



Dover Library



Glowing Pavilion



Close-up of entry

Renovation – Monitor Roof Pavilion



View from Center Street



Cementitious Panels



Standing Seam Metal



Patio



Roof Monitor

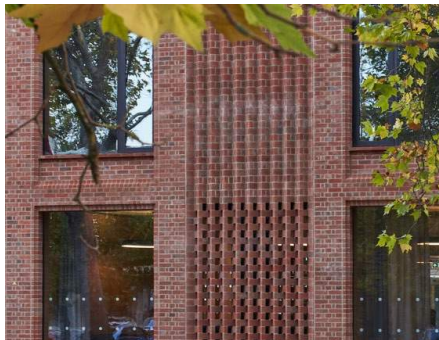
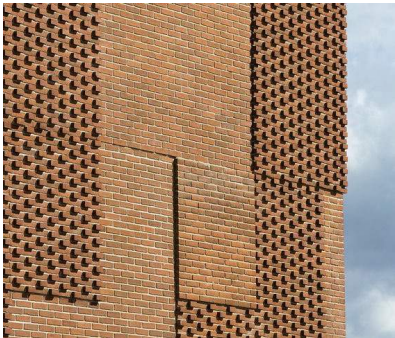


Close-up of entry

New 2-Story - Flat Roof



Corner of Springdale Ave.



Brick Texture



Glass Stair



Movement Studio



Close-up of entry

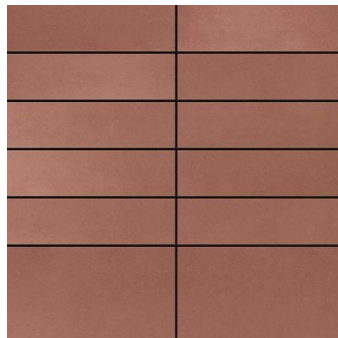
New 2-Story - Flat Roof



View from Center Street



UHP Cementitious Panels



Overhang



Overhang



Close-up of entry

