

GENERAL NOTES

THIS DESIGN HAS BEEN PREPARED IN ACCORDANCE WITH THE NATIONAL CONCRETE MASONRY ASSOCIATION DESIGN MANUAL FOR SEGMENTAL RETAINING WALLS (SRW), SECOND EDITION.

VERIFY EXISTING AND PROPOSED SITE GRADING PRIOR TO COMMENCING CONSTRUCTION.

BASE PLAIN TAKEN FROM "PROPOSED CONDITIONS PLAN" DATED 09/12/20 PREPARED BY OTHERS.

THE LOCATION OF EXISTING OR PROPOSED UTILITIES MUST BE VERIFIED PRIOR TO CONSTRUCTION. NOTIFY THE DESIGN ENGINEER IMMEDIATELY IF EXISTING OR PROPOSED UTILITIES INTERFERE WITH THE INSTALLATION OF ANY PORTION OF RETAINING WALL.

PROVIDE FIELD CONTROL OF ALL REINFORCED BACKFILL IN ACCORDANCE WITH SECTION 1804.3.3 OF THE MASSACHUSETTS STATE BUILDING CODE.

INSTALLATION NOTES:

EVALUATE ALL SLOPES IN THE FIELD BY A COMPETENT PERSON PER OSHA REQUIREMENTS. PREVENT DISTURBANCE OF ALL EXPOSED SLOPES AND BENCHES. COVER EXPOSED SLOPES WITH TAUPAULINS OR OTHER SIMILAR COVERINGS TO PREVENT EROSION OR WEATHERINGS.

EXCAVATE AND LEVEL THE SUBGRADE OF WALL AND REINFORCED OR INFILL SOIL ZONE. VERIFY THE CAPACITY OF THE SUBGRADE TO SUPPORT THE WALL. PREPARE SUBGRADE AT WALL AS NEEDED TO CONFORM WITH THE MINIMUM SUBGRADE DESIGN REQUIREMENTS.

INSTALL COMPACTED BASE. BASE MUST EXTEND 6-INCHES (MIN.) IN FRONT, 6-INCHES (MIN) BEHIND, AND 12-INCHES (MIN) BELOW THE FIRST COURSE OF UNITS.

SEE WALL SECTIONS FOR MINIMUM EMBEDMENT REQUIREMENTS. JOINTS BETWEEN ADJACENT UNITS SHOULD ALIGN WITH THE MIDDLE OF THE UNIT ABOVE TO CREATE A RUNNING BOND.

PLACE SEGMENTAL CONCRETE BLOCK UNITS TO THE LIMITS SHOWN ON THIS DRAWING AND IN ACCORDANCE WITH NOTES. INFILL SOIL WITHIN THE REINFORCED ZONE MUST MEET THE GRADATION REQUIREMENTS CONTAINED ON THIS DRAWING. COMPACT ALL INFILL SOIL WITHIN THE REINFORCED ZONE TO AT LEAST 95% DENSITY AS DETERMINED BY ASTM D1557

CONSTRUCT WALL WITH 2 INCH SET BACK PER 3'-0" COURSE IN SECTIONS SHOWN ON THESE DRAWINGS. .

CONCRETE:

ALL CONCRETE WORK SHALL CONFORM TO THE LATEST EDITION OF THE ACI BUILDING CODE REQUIREMENTS FOR REINFORCED CONCRETE (ACI 318) AND THE COMMONWEALTH OF MASSACHUSETTS STATE BUILDING CODE. IN CASE OF CONFLICT, THE STATE BUILDING CODE SHALL GOVERN.

ALL CONCRETE SHALL BE CONTROLLED CONCRETE, MIXED AND PLACED UNDER THE SUPERVISION OF AN APPROVED CONCRETE TESTING AGENCY.

CONCRETE SHALL BE NORMAL WEIGHT CONCRETE WITH SAND AND GRAVEL AGGREGATE, TYPE I OR TYPE II PORTLAND CEMENT HAVING A MINIMUM COMPRESSIVE STRENGTH ( $f_c$ ) IN 28 DAYS OF 4000 PSI.

ALL CONCRETE SHALL BE AIR ENTRAINED 6% ( $\pm 1\%$ ).

CONCRETE CAST ON SLOPED SURFACES SHALL BEGIN AT THE LOWEST ELEVATION AND CONTINUE MONOLITHICALLY TOWARD THE HIGHER ELEVATIONS UNTIL THE INTENDED POUR IS COMPLETED.

REINFORCING:

ALL CONCRETE REINFORCING BARS SHALL CONFORM TO ASTM A615, GRADE 60 EXCEPT WHERE NOTED. ALL REINFORCING BARS TO BE WELDED SHALL CONFORM TO ASTM A706. REINFORCING BARS MAY NOT BE WELDED WITHOUT PRIOR APPROVAL OF THE STRUCTURAL ENGINEER.

DETAILING OF CONCRETE REINFORCEMENT AND ACCESSORIES SHALL BE IN ACCORDANCE WITH ACI 315 - "MANUAL OF STANDARD PRACTICE FOR DETAILING REINFORCED CONCRETE STRUCTURES," LATEST EDITION.

Geotechnical Consultants, Inc.

201 Boston Post Road West  
Marlborough, MA 01752  
(508)229-0900 FAX (508)229-2279

0	Issue	12-24-2020
No.	Revision	Date

RETAINING WALL  
SECTIONS AND ELEVATIONS

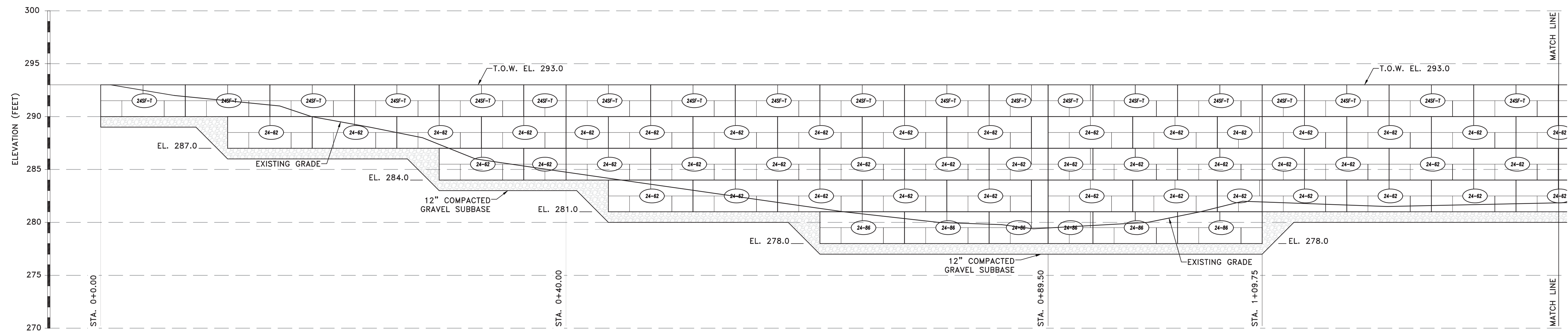
63 County Road  
Dover, Massachusetts

THESE CAD DOCUMENTS ARE RECORDED ON, OR CAN BE TRANSMITTED AS, ELECTRONIC MEDIA. THEY THEREFORE MAYBE SUBJECT TO UNDETECTABLE ALTERATION OR ERASURE, EITHER INTENTIONAL OR UNINTENTIONAL, DUE TO, AMONG OTHER CAUSES: TRANSMISSION, CONVERSION, MEDIA DEGRADATION, SOFTWARE ERROR, OR HUMAN ALTERATION. ACCORDINGLY, GEOTECHNICAL CONSULTANTS, INC., SHALL NOT BE HELD LIABLE FOR ANY CLAIMS, LOSSES, DAMAGES, OR COST ARISING OUT OF ANY SUCH ALTERATION OR UNAUTHORIZED RE-USE OR MODIFICATION OF THESE CAD DOCUMENTS. GEOTECHNICAL CONSULTANTS, INC. WILL BE ENTITLED TO FURTHER COMPENSATION FOR ANY FUTURE USE OF THE INFORMATION REPRESENTED IN THIS DOCUMENT BEYOND ITS IMMEDIATE PURPOSE.

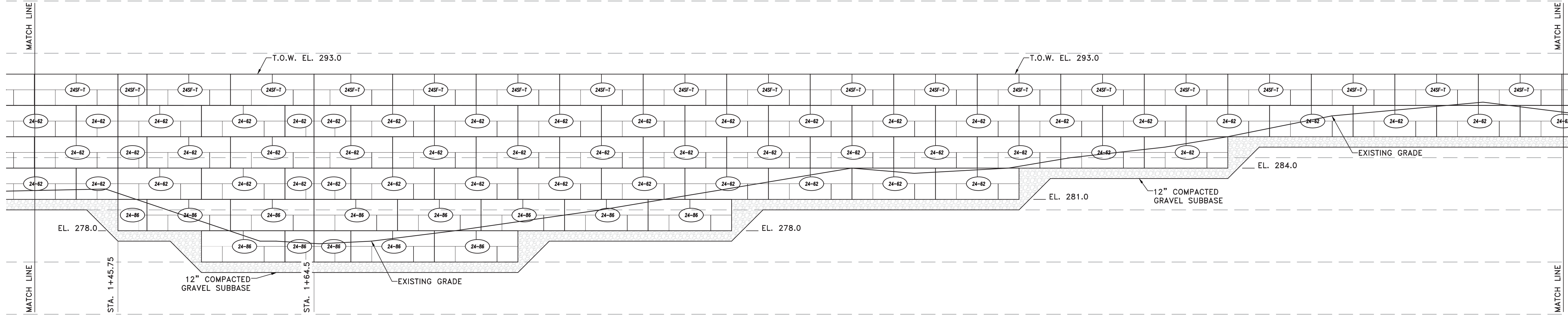
GCI # 2204961	
Date: 24 DEC 2020	Drawn By: JF
Scale: AS NOTED	Checked By: RP

Sheet No.  
RW1

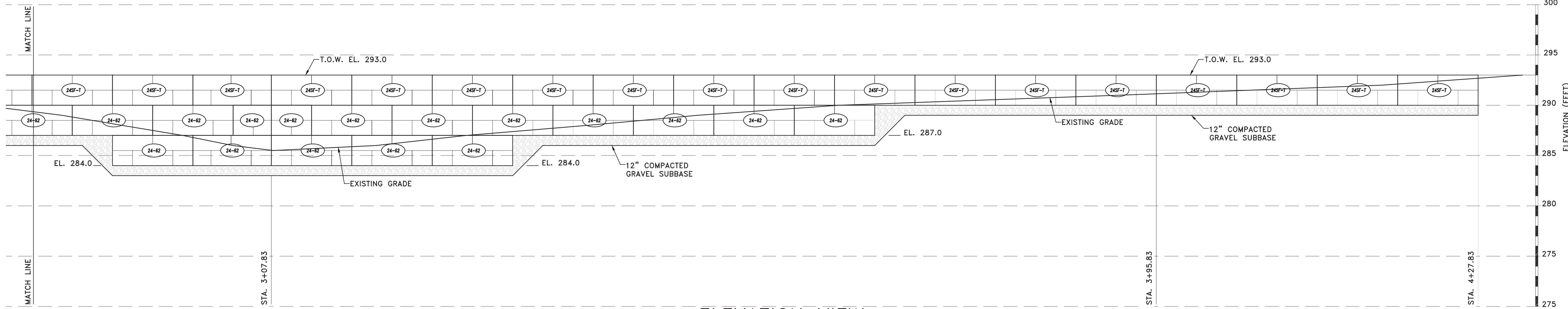




ELEVATION VIEW  
 $\frac{3}{16}'' = 1'-0''$

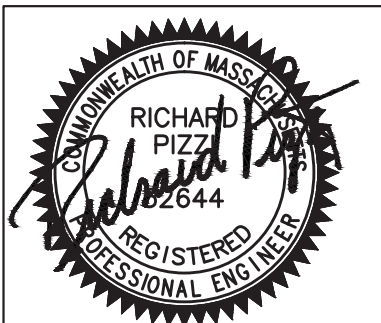


ELEVATION VIEW  
 $\frac{3}{16}'' = 1'-0''$



ELEVATION VIEW  
 $\frac{3}{16}'' = 1'-0''$

**Geotechnical Consultants, Inc.**  
 201 Boston Post Road West  
 Marlborough, MA 01752  
 (508)229-0900 FAX (508)229-2279



0	Issue	12-24-2020
No.	Revision	Date

**RETAINING WALL  
 SECTIONS AND ELEVATIONS**  
 63 County Road  
 Dover, Massachusetts

THESE CADD DOCUMENTS ARE RECORDED ON, OR CAN BE TRANSMITTED AS, ELECTRONIC MEDIA. THEY THEREFORE MAY BE SUBJECT TO UNDETECTABLE ALTERATION OR ERASURE, EITHER INTENTIONAL OR UNINTENTIONAL, DUE TO, AMONG OTHER CAUSES: TRANSMISSION, CONVERSION, MEDIA DEGRADATION, SOFTWARE ERROR, OR HUMAN ALTERATION. ACCORDINGLY, GEOTECHNICAL CONSULTANTS, INC., SHALL NOT BE HELD LIABLE FOR ANY CLAIMS, LOSSES, DAMAGES, OR COST ARISING OUT OF ANY SUCH ALTERATION OR UNAUTHORIZED RE-USE OR MODIFICATION OF THESE CADD DOCUMENTS. GEOTECHNICAL CONSULTANTS, INC. WILL BE ENTITLED TO FURTHER COMPENSATION FOR ANY FUTURE USE OF THE INFORMATION REPRESENTED IN THIS DOCUMENT BEYOND ITS IMMEDIATE PURPOSE.

GCI # 2204961  
 Date: 24 DEC 2020  
 Scale: AS NOTED  
 Drawn By: JF  
 Checked By: RP

**RW2**

Sheet No.