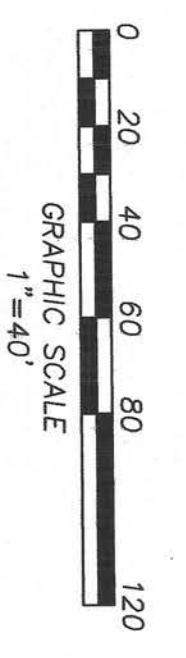
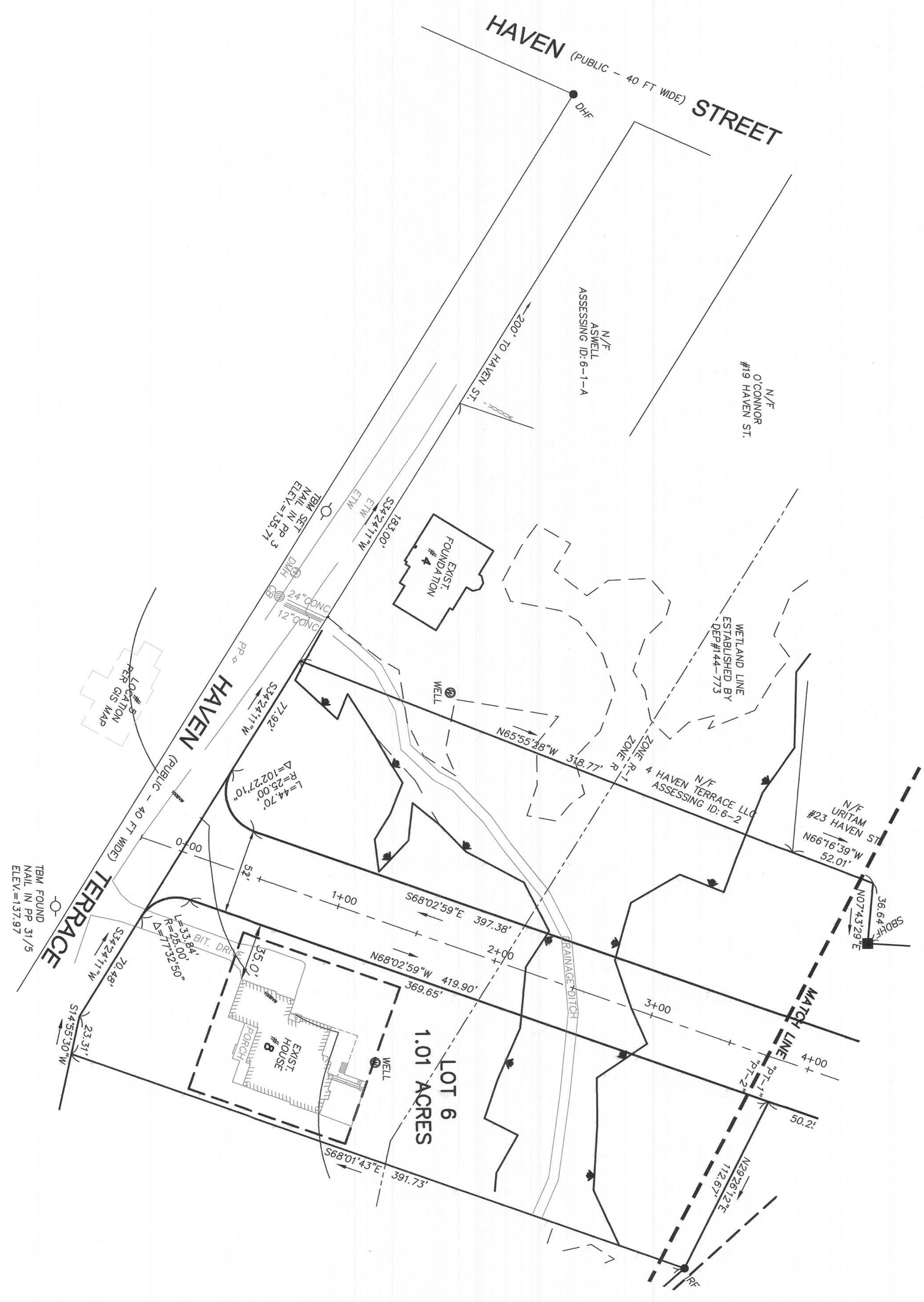


FOR REGISTRY USE ONLY

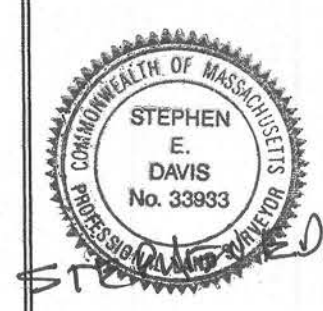
DATE _____

PLBK 691 - PLNO. 19 - 2015



**PRELIMINARY SUBDIVISION
LAYOUT PLAN "PT-2"**
HAVEN MEADOWS, DOVER, MASSACHUSETTS
AS PREPARED FOR
HAVEN MEADOWS LLC

**CHENEY
ENGINEERING CO., INC.**
53 MELLE STREET
NEEDHAM, MA 02494
TEL. 781-444-2188



DATE: 2/7/2019	PROJECT # 1963
REV. 5/28/19	ROAD LAYOUT AND ELIMINATE 2 LOTS

SHEET 7 OF 11