



FLANSBURGH

77 North Washington Street
Boston, Massachusetts 02114
617.387.3070 tel.
617.720.7873 fax
www.flansburgh.com

CIVIL ENGINEER

Meridian
69 Milk Street, Suite 302
Westborough, MA 01581
t. 508.871.7030

LANDSCAPE ARCHITECT

Brown Sardina
24 Roland St
Boston, MA 02129
t. 617.482.4703

STRUCTURAL ENGINEER

Roome & Guaracino
48 Grove Street
Somerville, MA 02144
t. 617.628.1700

MEP ENGINEER

BALA | TMP
52 Temple Place
Boston, MA 02111
t. 617.357.6060

Issue

Stamp

North Arrow

Charles River School
**Middle School
Building**

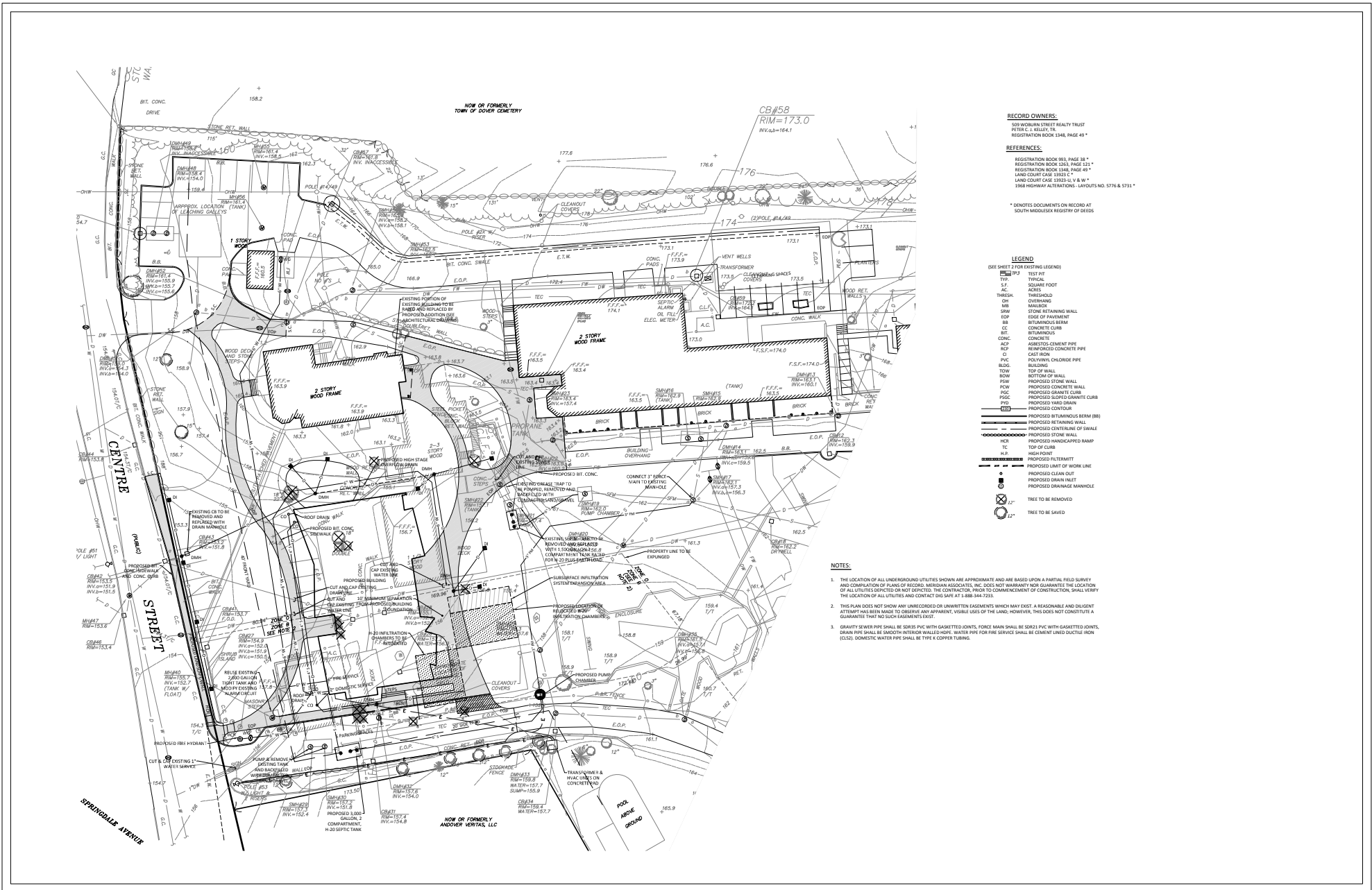
6 Old Meadow Rd. • Dover, MA 02030

Centre Street View

Site Plan Review

Not for Construction

Drawn By	JK	Project No.	1807.00
Reviewed By	DC	Scale	1/4" = 1'-0"
Date	October 17, 2016	CD or Final	1807 Model view
Sheet No.	A0.00		
	_____ of _____		



Flansburgh Architects
17 North Washington Street
Boston, Massachusetts 02114
617.267.3870 tel
617.220.7873 fax
www.flansburgh.com
Architecture
Master Planning
Space Planning
Interior Design

CIVIL ENGINEER
Meridian Associates
69 Milk Street, Suite 302
Westborough, MA 01581
t. 508.871.7030

LANDSCAPE ARCHITECT
Brown Sardino
24 Roland St
Boston, MA 02129
t. 617.482.4703

STRUCTURAL ENGINEER
Roome & Guaracino
48 Grove Street
Somerville, MA 02144
t. 617.628.1700

MEP ENGINEER
BALA | TMP
52 Temple Place
Boston, MA 02111
t. 617.357.6060

Charles River School
**Middle School
Building**

6 Old Meadow Rd. • Dover, MA 02030

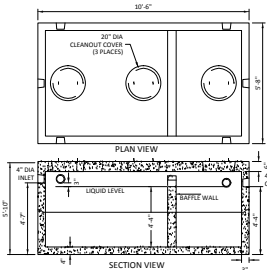
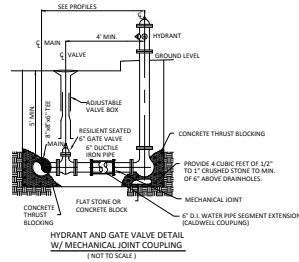
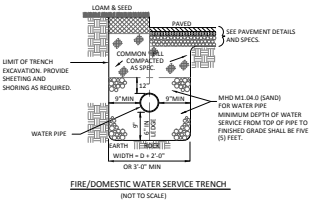
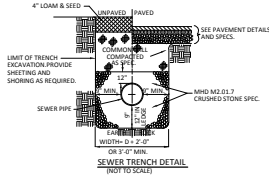
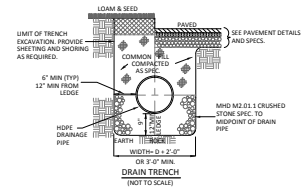
Drainage/Utility Plan

Site Plan Review

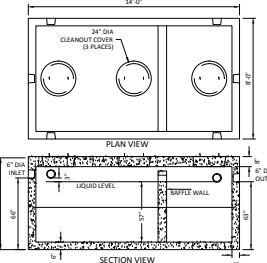
Not for Construction

Project No.	CPRS	Project ID	8405
Revision No.	MS	Date	11/28/21
Revision	October 17, 2016	Drawn By	MS
Revision		Check By	

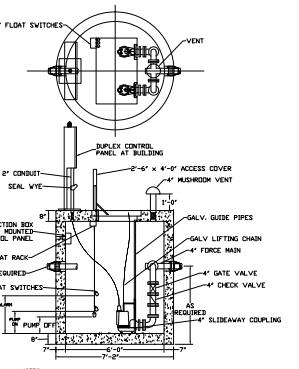
C-1
of



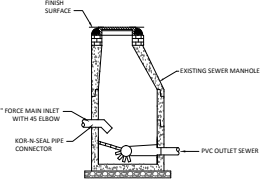
- NOTES:
1. SHEAR CONCRETE ITEM NO. TK-15000C OR APPROVED EQUAL.
 2. DESIGN CONFORMS WITH 310 CMR 5.01, DEP TITLE 5 REG. FOR SEPTIC TANKS.
 3. ALL REINFORCEMENT PER ASTM A1027.
 4. DESIGNED FOR H-20 LOADING.
 5. TONGUE & GROOVE JOINT SEALED WITH BUTYL RESIN.
 6. PROVIDE "INVERTED U" PIPING IN BAFFLE.
 7. BRING ALL THREE COVERS TO FINISHED GRADE.



- NOTES:
1. SHEAR CONCRETE ITEM NO. CTK-3000C OR APPROVED EQUAL.
 2. DESIGN CONFORMS WITH 310 CMR 5.01, DEP TITLE 5 REG. FOR SEPTIC TANKS.
 3. ALL REINFORCEMENT PER ASTM A1027.
 4. DESIGNED FOR H-20 LOADING.
 5. TONGUE & GROOVE JOINT SEALED WITH BUTYL RESIN.
 6. PROVIDE "INVERTED U" PIPING IN BAFFLE.
 7. BRING ALL THREE COVERS TO FINISHED GRADE.

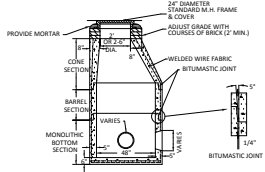


- NOTES:
1. CONCRETE 4,000 PSI MINIMUM AFTER 28 DAYS.
 2. REINFORCED STEEL CONFORMS TO LATEST ASTM A108.
 3. BUTYL RESIN SECTION JOINT CONFORMS TO LATEST ASTM D999 SPECIFICATION.



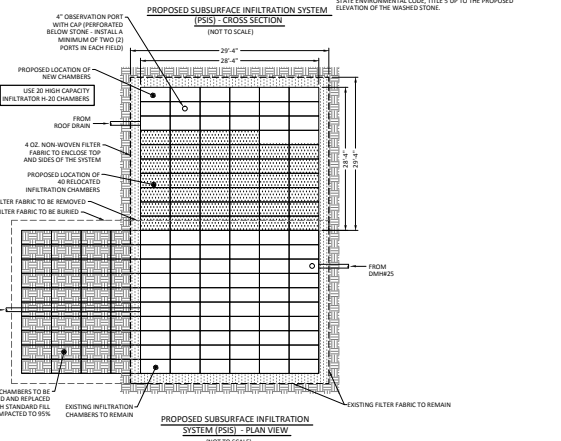
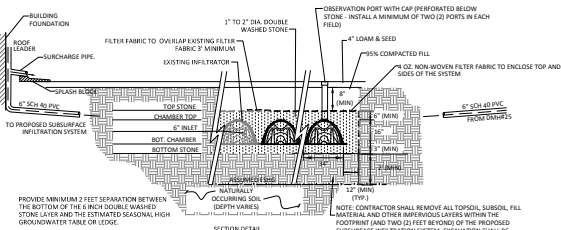
- NOTES:
1. KOR-N-SEAL FLEXIBLE PIPE CONNECTORS SHALL CONFORM TO LATEST ASTM C923, A167.

SEWER MANHOLE CONNECTION DETAIL
(NOT TO SCALE)

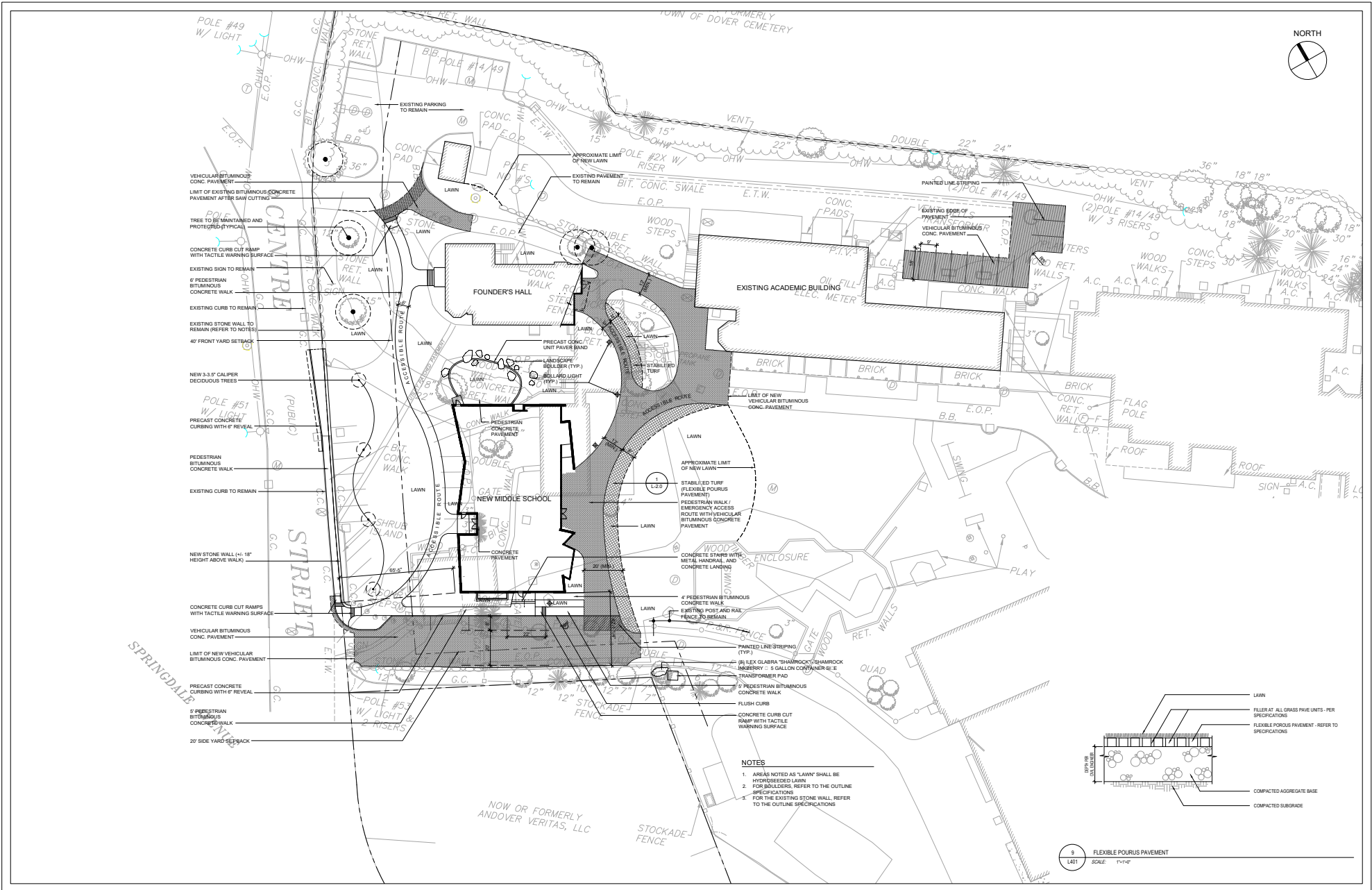


- NOTES:
1. MANHOLE DESIGN TO LATEST ASTM C418.
 2. REINFORCING STEEL CONFORMS TO LATEST ASTM A 36S.
 3. CONCRETE COMPRESSIVE STRENGTH: 4,000 PSI @ 28 DAYS.
 4. ONE FOUR MONOLITHIC BASE.
 5. WHEN SPECIFIED, MANHOLES WATERPROOF COATED.
 6. BITUMASTIC BUTYL RUBBER FOR JOINTS CONFORM TO LATEST ASTM C413 AND FED 55-5-201A SPEC.

DRAIN MANHOLE DETAIL
(NOT TO SCALE)



- NOTES:
1. MAINHOLE DESIGN TO LATEST ASTM C418.
 2. REINFORCING STEEL CONFORMS TO LATEST ASTM A 36S.
 3. CONCRETE COMPRESSIVE STRENGTH: 4,000 PSI @ 28 DAYS.
 4. ONE FOUR MONOLITHIC BASE.
 5. WHEN SPECIFIED, MANHOLES WATERPROOF COATED.
 6. BITUMASTIC BUTYL RUBBER FOR JOINTS CONFORM TO LATEST ASTM C413 AND FED 55-5-201A SPEC.



Flansburgh Architects

17 North Washington Street
Boston, Massachusetts 02114
617.367.2670 tel
617.720.7873 fax
www.flansburgh.com
Architecture
Master Planning
Space Planning
Interior Design

CIVIL ENGINEER
Meridian
69 Milk Street, Suite 302
Westborough, MA 01581
t. 508.871.7030

LANDSCAPE ARCHITECT
Brown Sardino
24 Roland St
Boston, MA 02129
t. 617.482.4703

STRUCTURAL ENGINEER
Roome & Guaracino
48 Grove Street
Somerville, MA 02144
t. 617.628.1700

MEP ENGINEER
BALA | TMP
52 Temple Place
Boston, MA 02111
t. 617.357.6060

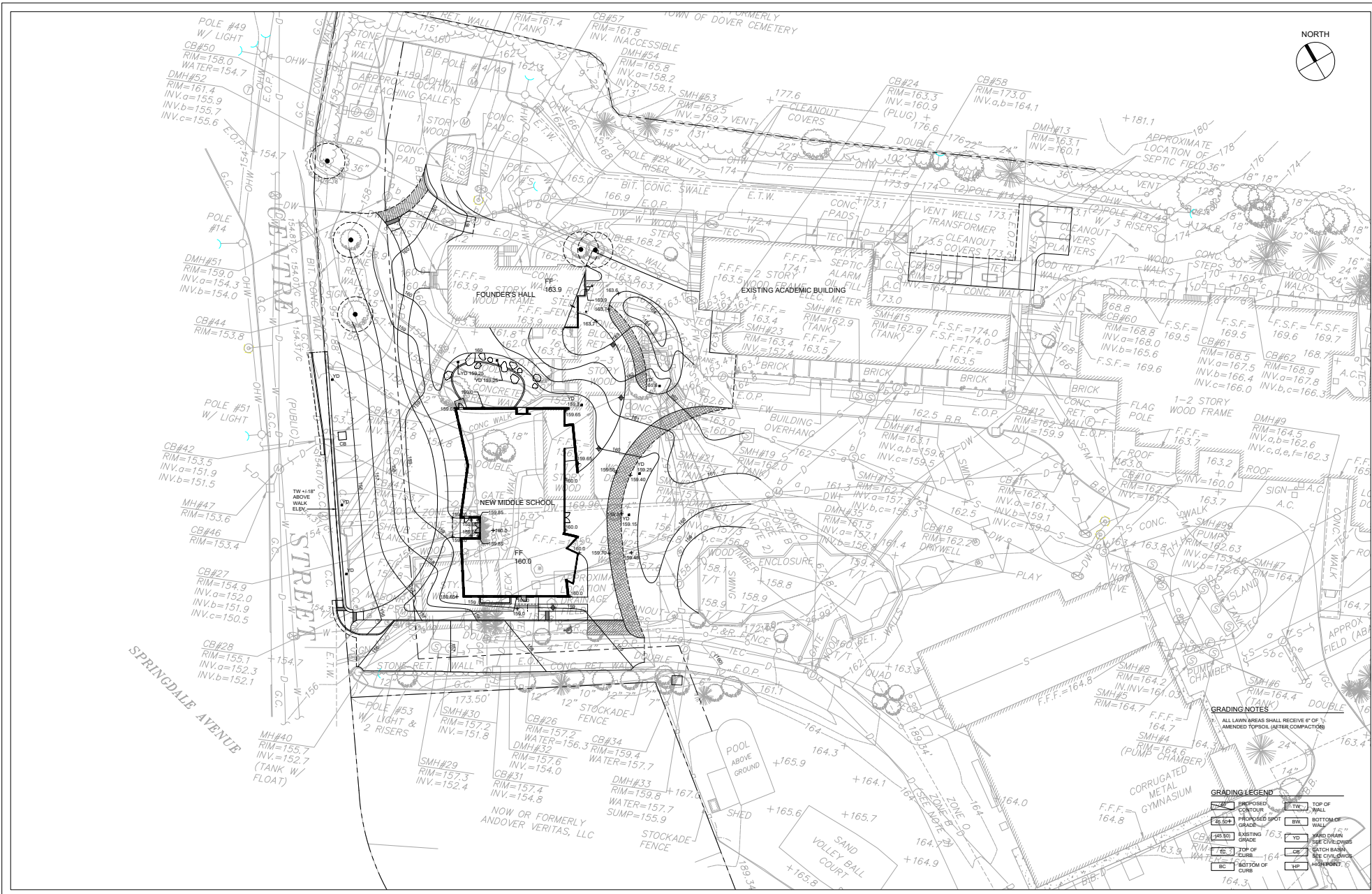
Charles River School
**Middle School
Building**

6 Old Meadow Rd. • Dover, MA 02030

Site Development and Landscape Plan

Site Plan Review
Not for Construction

Project: LPO	Project ID: 1607.00
Client: MES	Scale: 1"=20'-0"
Date: October 17, 2016	Drawn By: [Signature]
Revised:	
L-2.0	
of	



Flansburgh Architects

11 North Vaziringer Street
Boston, Massachusetts 02114
617.367.2970 tel
617.720.1973 fax
www.flansburgh.com
Architecture
Master Planning
Space Planning
Interior Design

CIVIL ENGINEER

Meridian
69 Milk Street, Suite 302
Westborough, MA 01581
t. 508.871.7030

LANDSCAPE ARCHITECT

Brown Sardino
24 Roland St
Boston, MA 02129
t. 617.482.4703

STRUCTURAL ENGINEER

Roome & Guaracino
48 Grove Street
Somerville, MA 02144
t. 617.628.1700

MEP ENGINEER

BALA | TMP
52 Temple Place
Boston, MA 02111
t. 617.357.6060

Charles River School
**Middle School
Building**

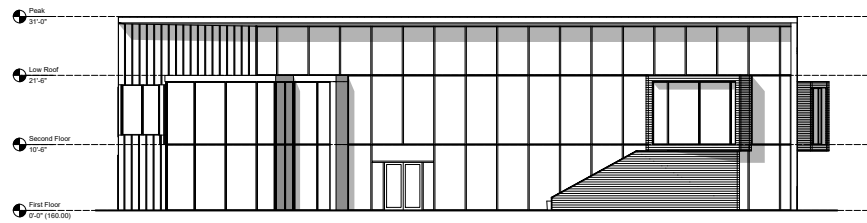
6 Old Meadow Rd. • Dover, MA 02030

Grading Plan

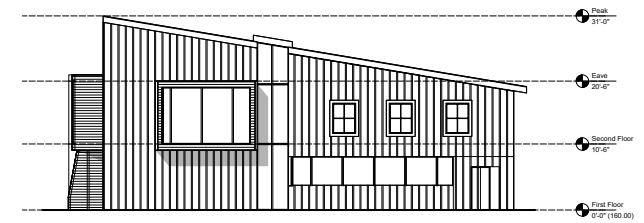
Site Plan Review

Not for Construction

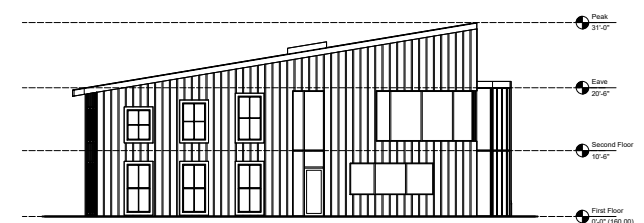
Project	LPO	Project No.	1007.00
Client	MES	Date	11-20-21
Rev	October 17, 2016	Drawn By	
Scale		Sheet No.	
L-3.0			



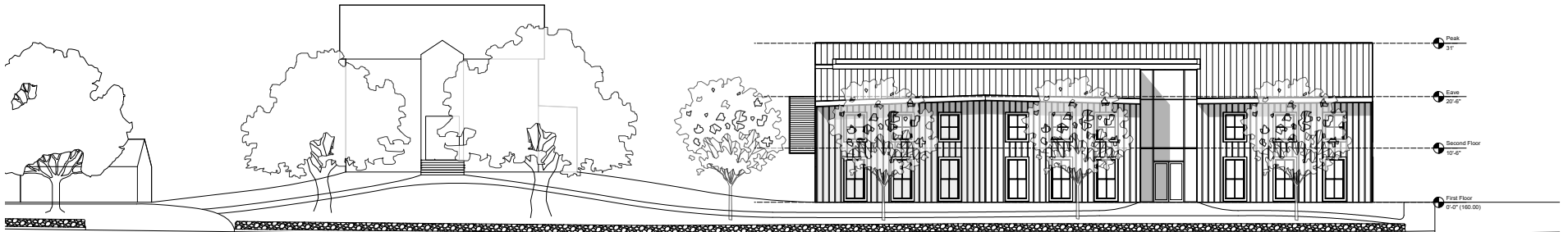
1 Playground (East) Elevation
1/8" = 1'-0"



2 North Elevation
1/8" = 1'-0"



3 South Elevation
1/8" = 1'-0"



4 Centre St. (West) Elevation
1/8" = 1'-0"

FLANSBURGH

77 North Washington Street
Boston, Massachusetts 02114
617.387.7870 tel.
617.720.7873 fax
www.flansburgh.com

CIVIL ENGINEER

Meridian
69 Milk Street, Suite 302
Westborough, MA 01581
t. 508.871.7030

LANDSCAPE ARCHITECT

Brown Sardina
24 Roland St
Boston, MA 02129
t. 617.482.4703

STRUCTURAL ENGINEER

Roome & Guaracino
48 Grove Street
Somerville, MA 02144
t. 617.628.1700

MEP ENGINEER

BALA | TMP
52 Temple Place
Boston, MA 02111
t. 617.357.6060

Issue

Stamp

North Arrow

Charles River School
**Middle School
Building**

6 Old Meadow Rd. • Dover, MA 02030

Site Elevations

Site Plan Review

Not for Construction

Drawn By	JK	Project No.	1607.00
Reviewed By	DC	Scale	1/8" = 1'-0"
Date	October 17, 2016	CD/Title Block	1607 Model view
Sheet No.	A0.10		
	of		